

INDOOR
FITNESS


CATALOG


element[®]
FITNESS

we bring the solution to your challenge



WE BRING A SOLUTION TO YOUR CHALLENGE



At Element Fitness, we're not just equipment manufacturers; we're your fellow athletes. Our commitment shines in the face of challenges, making us a leading name in the production of indoor and outdoor functional training zones across Europe.

WWW.ELEMENTFITNESS.EU



In-House Production

From 3D laser cutting to powder coating, our in-house manufacturing ensures precision and quality at every step.

Limitless Customization

Unleash your creativity, and we'll bring it to life. Our products are fully customizable, reflecting your ideas in color, size, and personalized attachments.

Turnkey Solutions

Safety, accessibility, functionality — our outdoor and indoor training zones embody these principles. Achieve your fitness goals effortlessly with our thoughtfully designed equipment.

Swift Dispatch

With most components in stock, we guarantee fast delivery, even for unique solutions.

Robust Supply Chain

Our distribution network spans 15+ European countries, ensuring a seamless and uninterrupted supply.

Long-Term Partnership

Your success is our success. We value our partners, working to save costs and provide unwavering support before and after equipment delivery. Reach out, and we'll be there for you.

FUNCTIONAL LED TRAINING RIGS



FIRST ON THE MARKET
RIGS WITH LED LIGHTS

ECLIPSE GYM, HEDEL, NETHERLANDS

ILLUMINATE YOUR FITNESS JOURNEY

Embark on a fitness journey like never before with our groundbreaking functional training rig. As pioneers in the field, we've introduced the first-ever rig with in-built changeable LED lights, transforming workout into a magical experience.

Plug-and-Play Brilliance

Simple yet sophisticated, our rig boasts plug-and-play electrical setups, making it effortlessly easy to immerse yourself in a world where lighting adapts to your every move. A touch of a remote control unveils a new challenge, adding a touch of enchantment to your functional training space.

STAY FIT GYM

The image shows a modern gym interior. The ceiling is dark with exposed pipes and red LED lighting strips. The floor is green artificial turf with white markings. In the foreground, a man in a tan shirt and blue jeans is walking with a woman in a maroon shirt and red leggings. They are surrounded by yellow and black multi-training rigs. In the background, other people are working out on various machines. A black and yellow punching bag hangs from the ceiling on the right side.

Stay Fit Gym network, Romania

Rigs are equipped with obstacle race attachments, exclusively designed for the renowned Stay Fit gym network in Romania. These bespoke creations bring an exciting twist to traditional training, featuring top-of-the-line elements like revolver and twister pull-up bars that elevate workouts to new heights. The vibrant LED lights not only enhance visibility but also create an ambiance that captures the essence of modern fitness. In a world where trends and style are as important as the workout itself, our LED multi-training rig becomes a magnet for those who seek both results and an unmatched fitness journey.

LED lights dynamic addition doesn't just attract attention; it attracts revenue. With our expertise in blending fitness and design, we've ensured that Stay Fit's investment in our LED multi-training rig translates to increased memberships and a devoted fitness community.



#STAYFITGYM
PT

 **STAYFITGYM**
IT'S YOUR LIFESTYLE

HAWAIIAN POKE BOWL

Hawaiian Poké Bowl, Antwerp, Belgium

Our focus goes beyond CrossFit-style functional training; together with our partners at STRIDE, we've crafted an all-encompassing space catering to strength, OCR, gymnastics, and endurance training. Addressing every fitness need, it's a holistic approach for our clients and their members. To create a truly unique ambiance, we've integrated LED lights into our training rig. Not just a workout space but an experience that complements the lighting of the entire area.

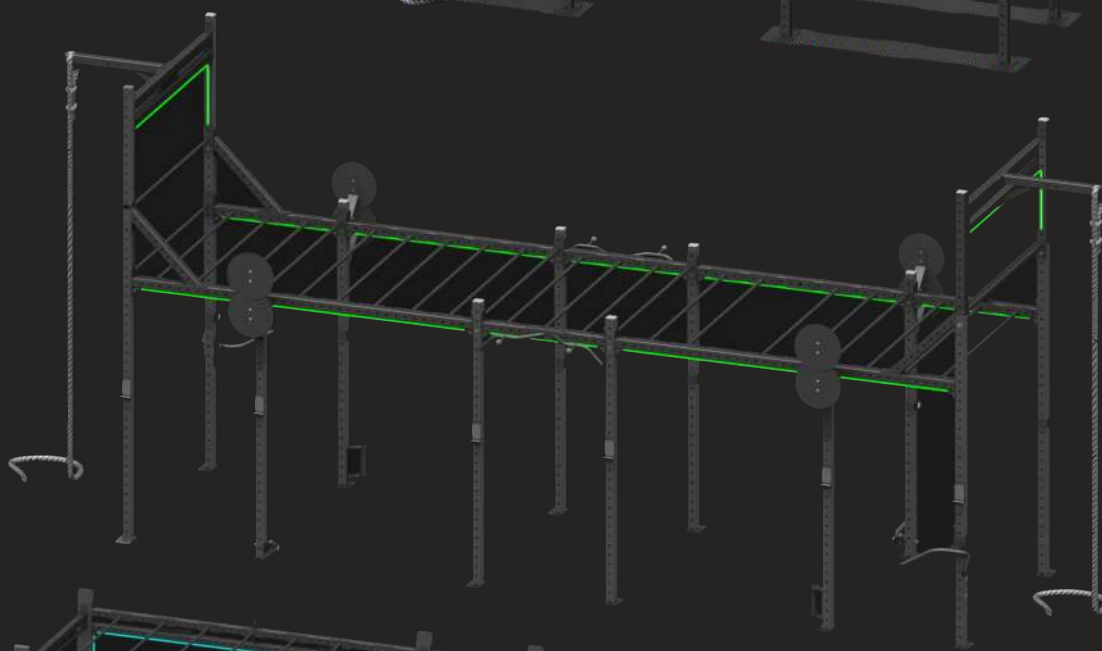
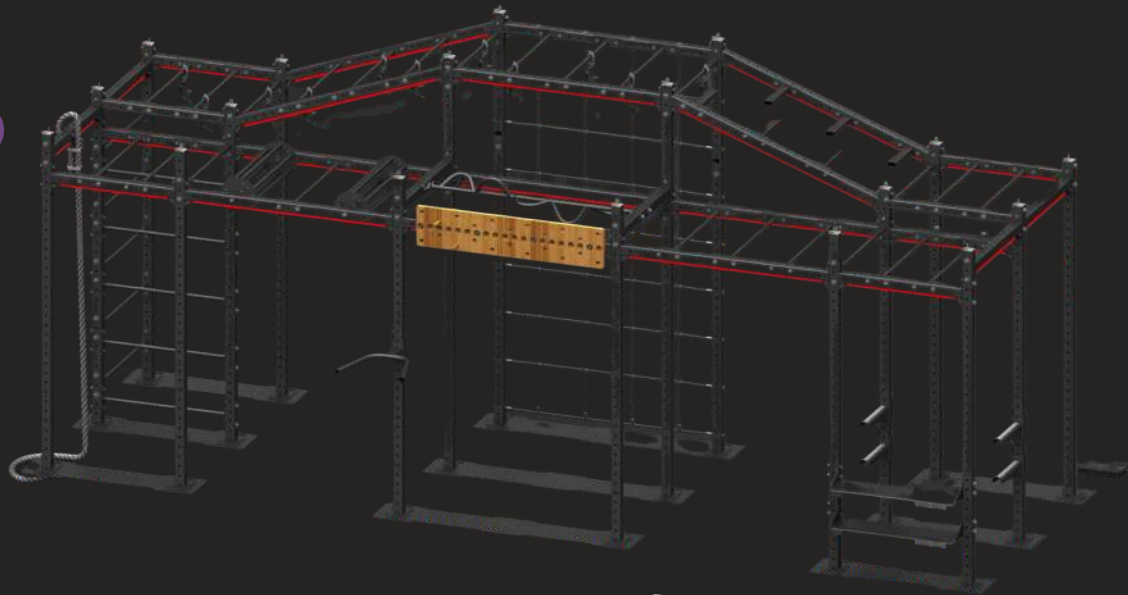
Crafting a one-of-a-kind functional training rig is our challenge and passion. We make it a seamless experience for our partners — an installation that's as unique as it is user-friendly. Because when the ordinary isn't enough, we provide extraordinary solutions!



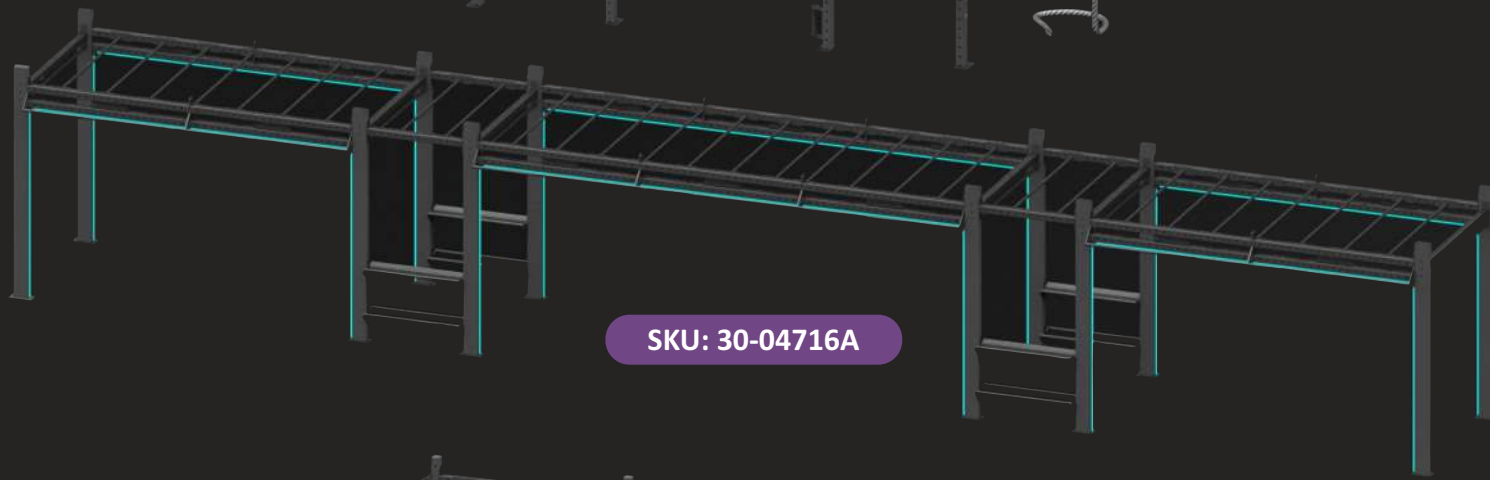
RADIANCE IN EVERY REP



SKU: 30-12524



SKU: 30-10275



SKU: 30-04716A



SKU: 30-09606

4X GYM CASE: MOBILE TRAINING CAMP



Mobilizing Excellence

For those entrusted with the safety of others, precision is paramount. Our Mobile Tactical Camp isn't just fitness equipment; it's a lifelike simulation tool. It cultivates readiness for unique scenarios, fostering confidence in tactical athletes.

Compact Powerhouse

Unveil the universal brilliance of our Mobile Tactical Camp — a compact training facility for six. From assembly to utilization, every detail is meticulously designed, ensuring quick setup and simplicity. It's more than equipment; it's an indispensable ally.

An irreplaceable team member

Transforming into a portable pull-up rack and Olympic Lifting Stand, our camp is a comprehensive fitness arsenal. Its mobility allows tactical teams to create a potent training area anywhere, adapting to both confined spaces and outdoor terrains.



The mobile tactical training camp converts into a portable pull-up rack and Olympic Lifting Stand with monkey bars and dip bars - it has room to carry battle ropes, body weight straps, rings, and a variety of other fitness accessories.

The training camp fits easily in the back of a van or SUV and can be carried by two people. In less than 30 minutes, this camp sets up, offering a dynamic space for diverse exercises. Its modular design allows seamless connection for group training.

SKU: 20-05800

EUIPO reg.No 007786686-0001

WWW.ELEMENTFITNESS.EU

OBSTACLE AND NINJA TRAINING RIGS

Element Fitness obstacle rigs

redefines training, blending versatility and functionality. Customizable for indoor and outdoor use, year-round, it hones tactical fitness skills for athletes and enthusiasts alike.

Expandable and combinable, our rigs are a canvas for your training needs. Whether you're a pro or an amateur, create distinct complexes to elevate your skills and conquer obstacles, on the course and in life.



No restrictions, no boundaries. From urban settings to rural landscapes, in winter's chill or summer's warmth, our rigs adapt. For durability in harsh weather, opt for galvanized pillars, ensuring an enduring legacy.

Crafted with precision, our structures boast drainage holes, preventing water stagnation and icing. It's not just equipment; it's a commitment to your enduring fitness journey.



MediFit, Rüsselsheim, Germany

Together with our partners at Mass:stab we have created 3-lane functional training rig with hot dip galvanization, for the harshest weather conditions. The rig has plenty of obstacles to climb around, a 6m long climbing wall with adjustable fall angle, salmon ladders, and plenty of workplaces for exercising with the bar.

The whole outdoor setup was spiced with the additional ninja steps, climbing nets, and jumping spheres, aligned around the area and forming a great obstacle lane to enjoy while exercising.



BFIT24[®]

**FITNESS
REDUCED
TO THE MAX**

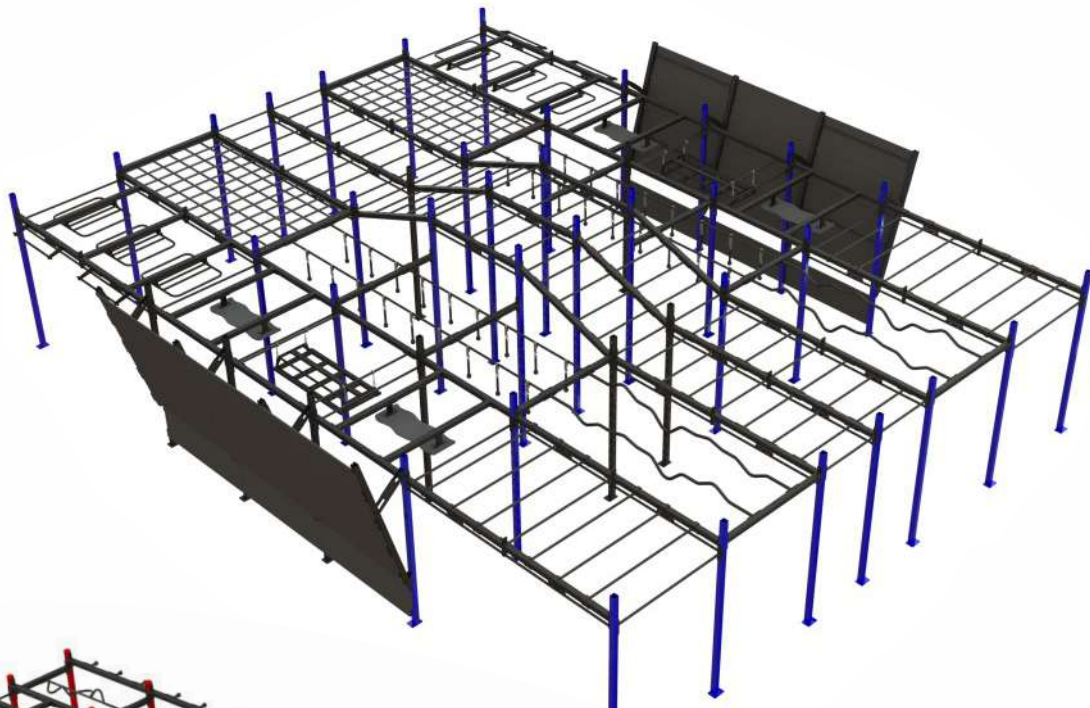
element[®]
FITNESS
ELEMENTFITNESS.EU

Bfit24, Henstedt-Ulzburg, Germany

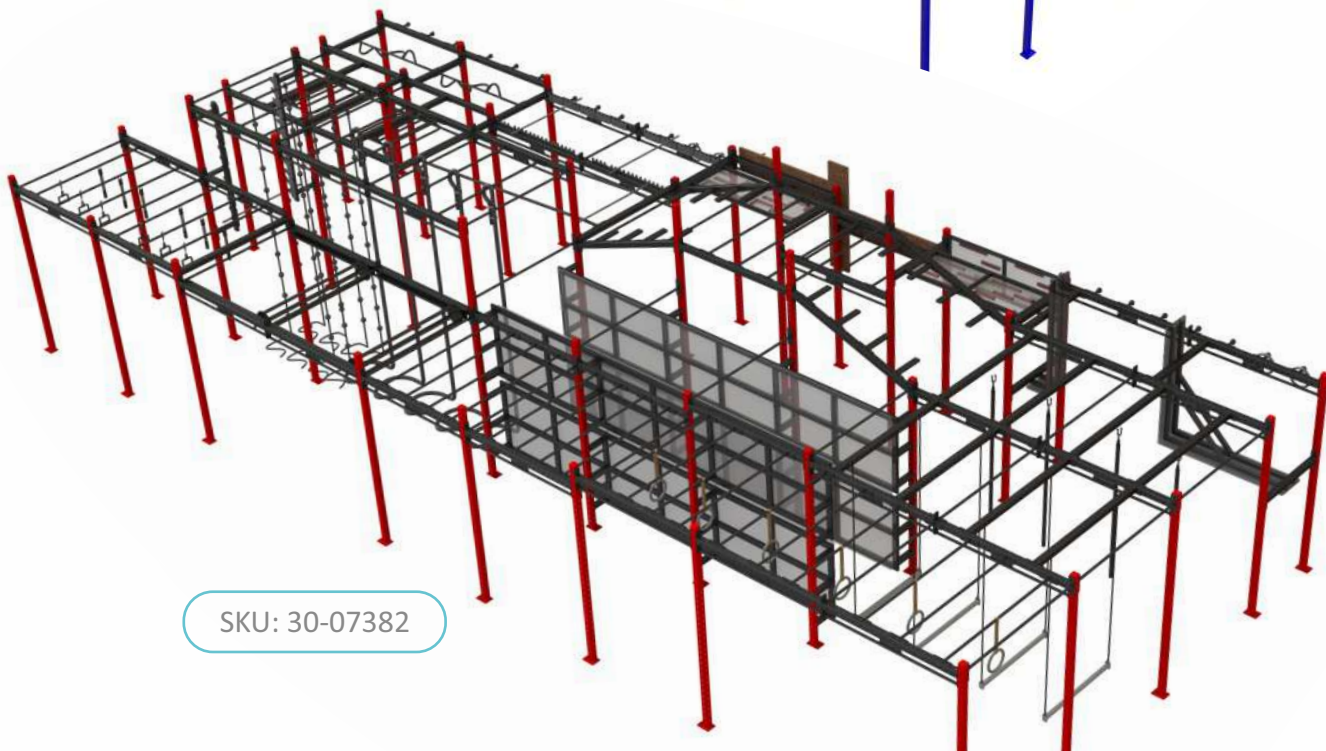
Mario Burmeister, the visionary behind BFit24, envisioned a groundbreaking expansion for his Ulzburg gym in Germany. To elevate the fitness experience, plans unfolded for an OCR and Ninja Warrior obstacle rig, coupled with a dynamic running ramp.

Our collaboration birthed 3D visualizations, a masterpiece of innovation. The "Monster" Rig, spanning 160 m², emerged as the centerpiece. Comprising 3 main lanes and 2 side lanes, it promised an inspiring journey with 2-level monkey bars, nets, ropes, bridges, and more.

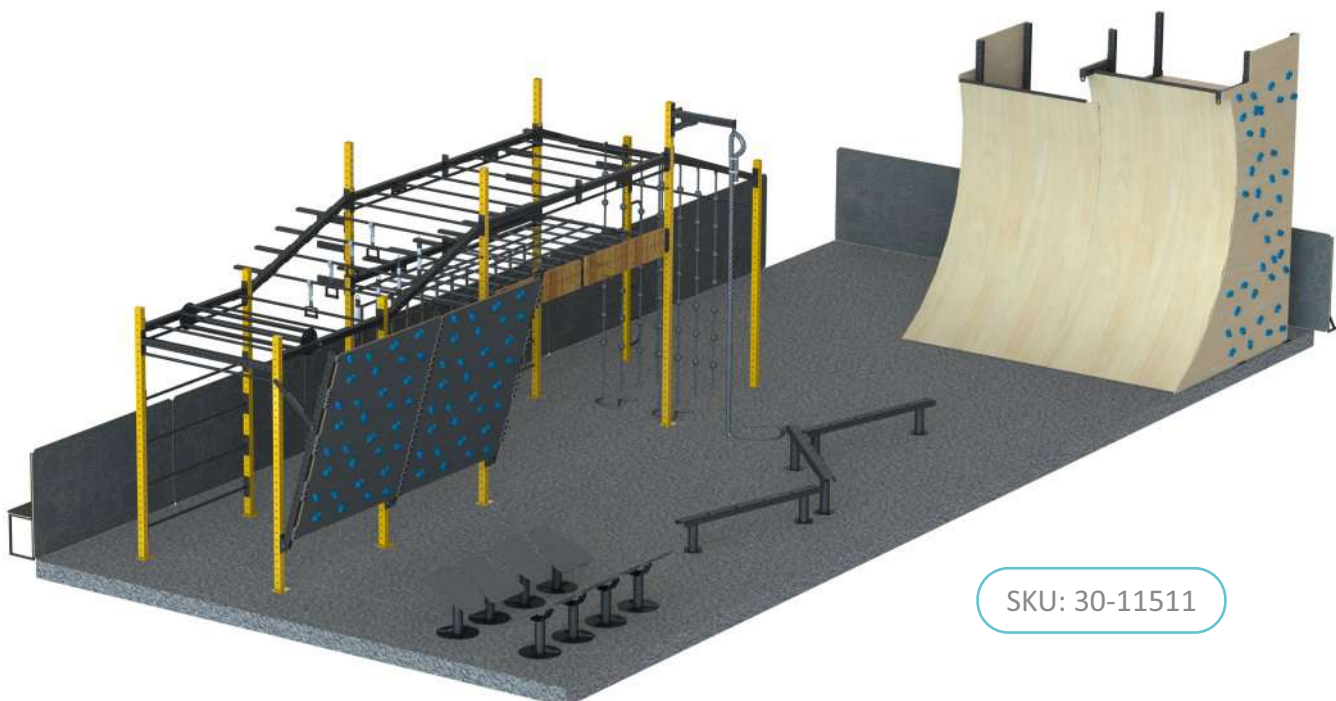
SKU: 30-04187



SKU: 30-07382



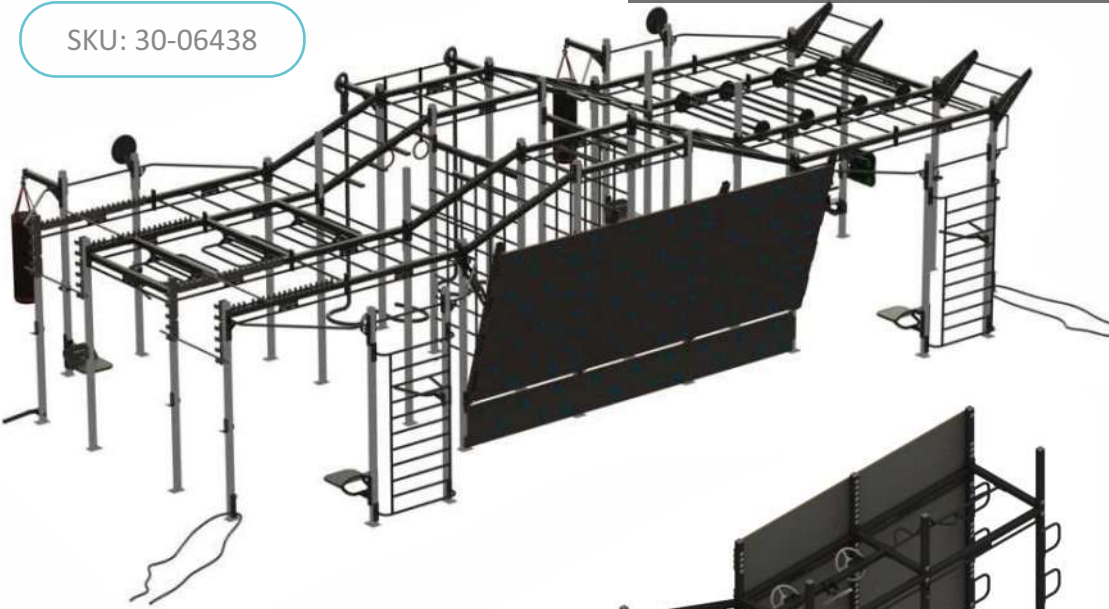
WWW.ELEMENTFITNESS.EU



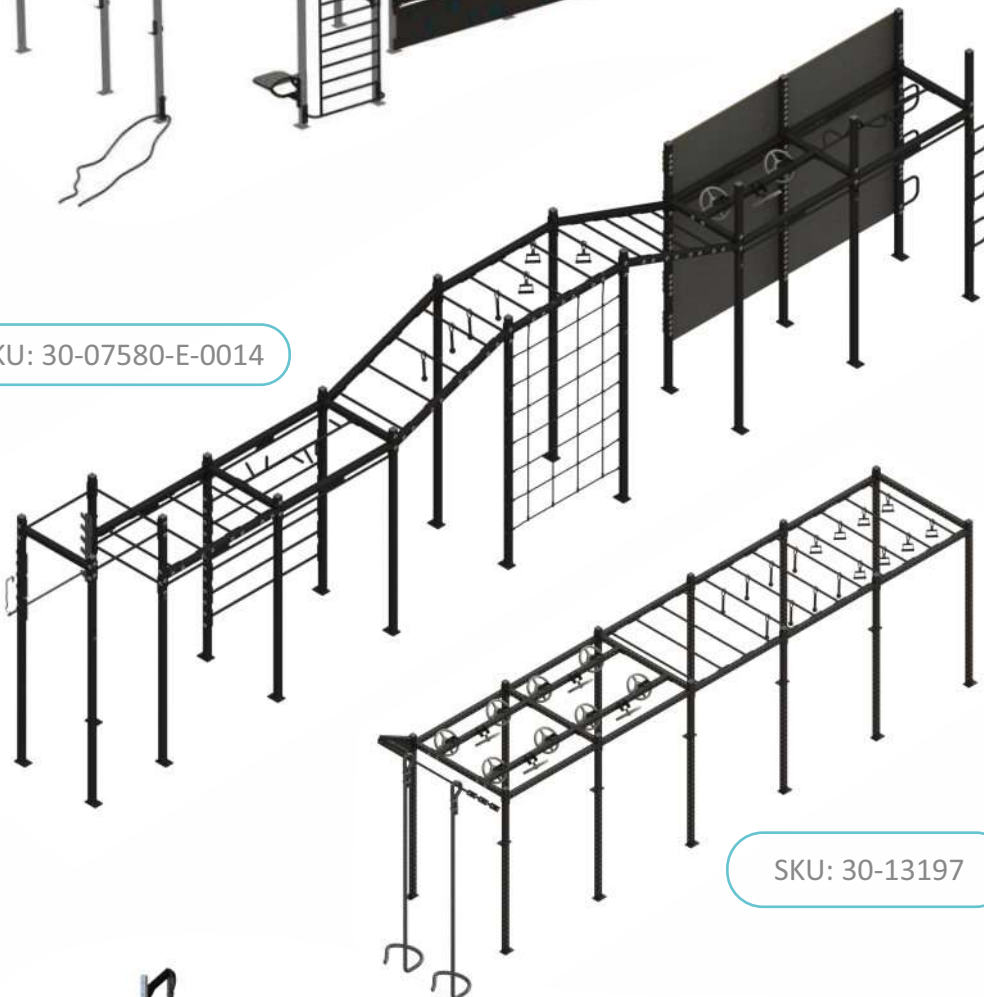
SKU: 30-11511

OBSTACLE RIGS

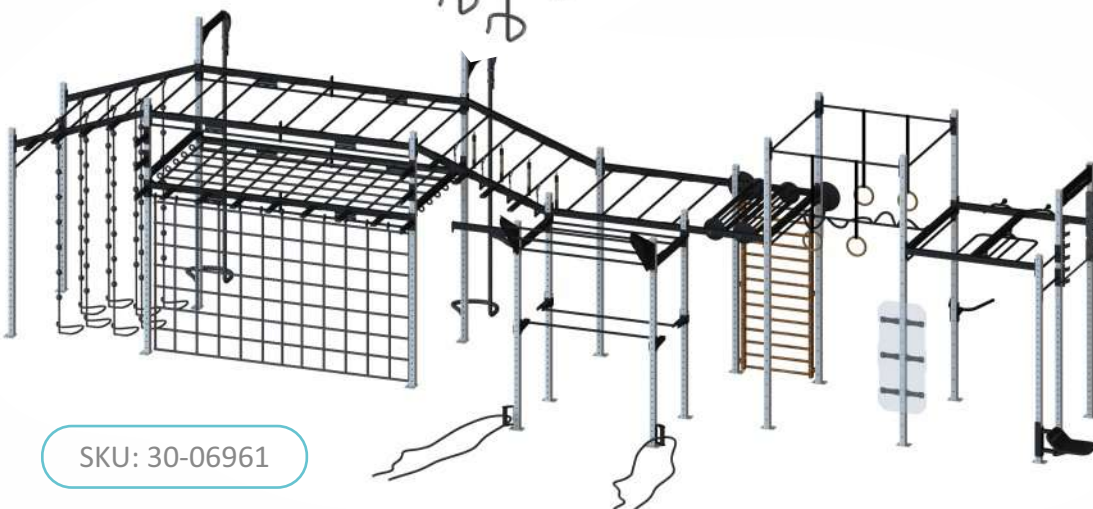
SKU: 30-06438



SKU: 30-07580-E-0014



SKU: 30-13197



SKU: 30-06961



INFINITY OBSTACLE TRAINING RIGS

WWW.ELEMENTFITNESS.EU

LIMITED
DIMENSIONS

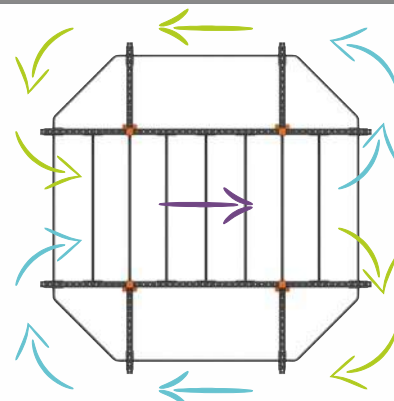
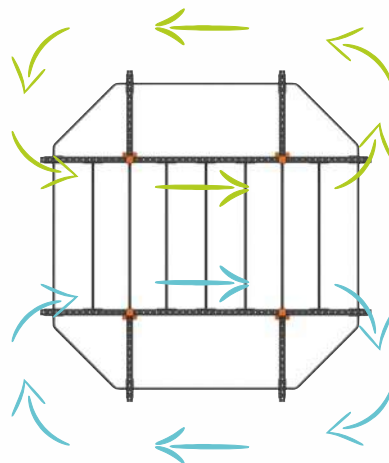
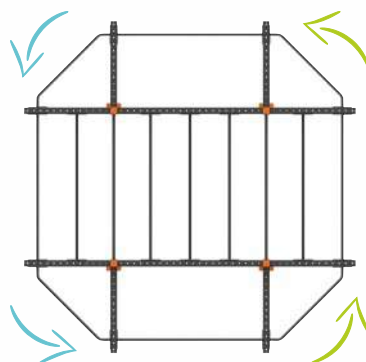
UNBOUNDED
FREEDOM

alojas



SKU: 30-12822

VIEW FROM ABOVE - MOVEMENT OPTIONS



INFINITY OBSTACLE TRAINING RIGS

A black and white photograph of a man in a dark long-sleeved shirt and dark pants performing a pull-up on a metal obstacle training rig. He is smiling and looking towards the right. The rig consists of several horizontal bars and vertical supports. In the background, there are ornate architectural details, including a large, muscular statue of a man's torso and a decorative archway. The lighting is dramatic, with strong highlights and deep shadows.

WWW.ELEMENTFITNESS.EU

Our journey at Element Fitness involves constant testing and innovation, and the obstacle course training field is no exception. Our latest creation, the Infinite Obstacle Stations, are designed with a mission: making obstacle course race training accessible worldwide.

Considerations like budgets, space constraints, and transportation options led to this compact yet infinitely versatile OCR solution. Tailor your station—dimensions, color, attachments—and step onto the stage. It's not just training; it's a movement, a commitment to staying fit, ready, and limitless.



INFINITY RIG S



Length: 4048 mm
Width: 4048 mm
Height: 2813 mm

SKU: 30-12227-1

INFINITY RIG M



Length: 5904 mm
Width: 4048 mm
Height: 3853 mm

SKU: 30-12243-1

INFINITY RIG L



Length: 7759 mm
Width: 4048 mm
Height: 3853 mm

SKU: 30-12020-1

LIMITED
DIMENSIONS

UNBOUNDED
FREEDOM

OBSTACLE COURSE/NINJA TRAINING ACCESORIES

WWW.ELEMENTFITNESS.EU



SKU: 10-14489
CLIMBING-ROPE-50MM
4,5M



SKU: 20-05531
WOODEN GYMNASTIC
RINGS WITH BELTS



SKU: 20-11084
GRIP TRAINER
HALF PINCH



SKU: 20-09079
PEG BOARD



SKU: 10-14490
CLIMBING ROPE 50MM
4.5M HEMP



SKU: 20-05531
PLASTICS GYMNASTIC
RINGS WITH BELT



SKU: 20-11173
GRIP TRAINER
HANDLE



SKU: 20-11172
GRIP TRAINER
BALL M



SKU: 00-03952
CLIMBING WALL ROPE
20MM, 4M



SKU: 00-03948
JUMP ROPE 38MM
3M



SKU: 20-03246
OBSTACLE TRAINER
PINCH



SKU: 20-11171
GRIP TRAINER BALL S



SKU: 20-11081
GRIP TRAINER ROPE
38MM 45CM



SKU: 20-11083
GRIP TRAINER ROPE 38MM
45CM HEMP



SKU: 20-07952
GRIP TRAINER RIBBED
NUNCHUCKS

The secret to your success and personal records as an obstacle course runner, whether you're an American Ninja star, Tough Run competitor, or fitness enthusiast, is grip strength and endurance. Our grip training accessories are ideal for those starting their OCR training or just looking to mix up their workouts.

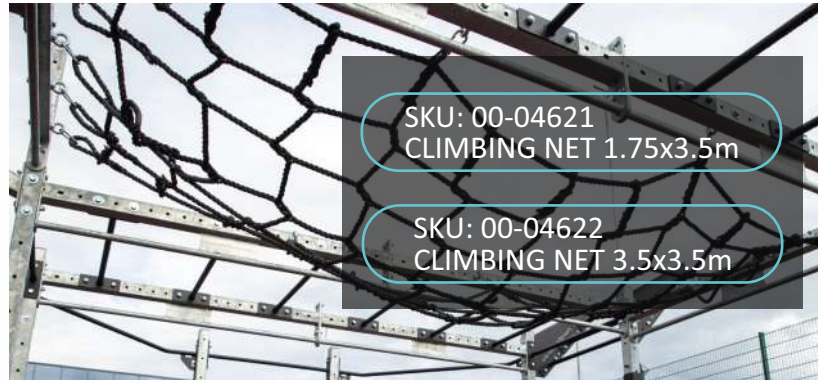
WWW.ELEMENTFITNESS.EU



SKU: 20-07957
GIBBON GRIP



SKU: 20-03265
ON BEAM STAIRWAY-R



SKU: 00-04621
CLIMBING NET 1.75x3.5m

SKU: 00-04622
CLIMBING NET 3.5x3.5m



SKU: 10-04183
PEG BOARD



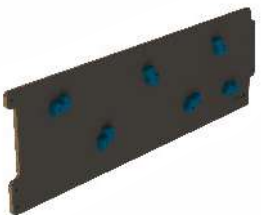
SKU: 20-03267
ON BEAM STAIRWAY L



SKU: 20-03275
UNSTABLE BRIDGE



SKU: 20-05151
SALMON LADDER SET



SKU: 20-03235
CLIMBING BOARD



SKU: 20-03271
ON BEAM STAIRWAY



SKU: 20-04333
TWISTER PULL-UP BAR



SKU: 20-07392
THE RAMP



SKU: 20-07950
GRIP TRAINER



SKU: 20-02494
ON BEAM SPHERE



SKU: 20-03484
REVOLVER PULL-UP BAR

ELEMENT FITNESS TRAINING CONTAINERS

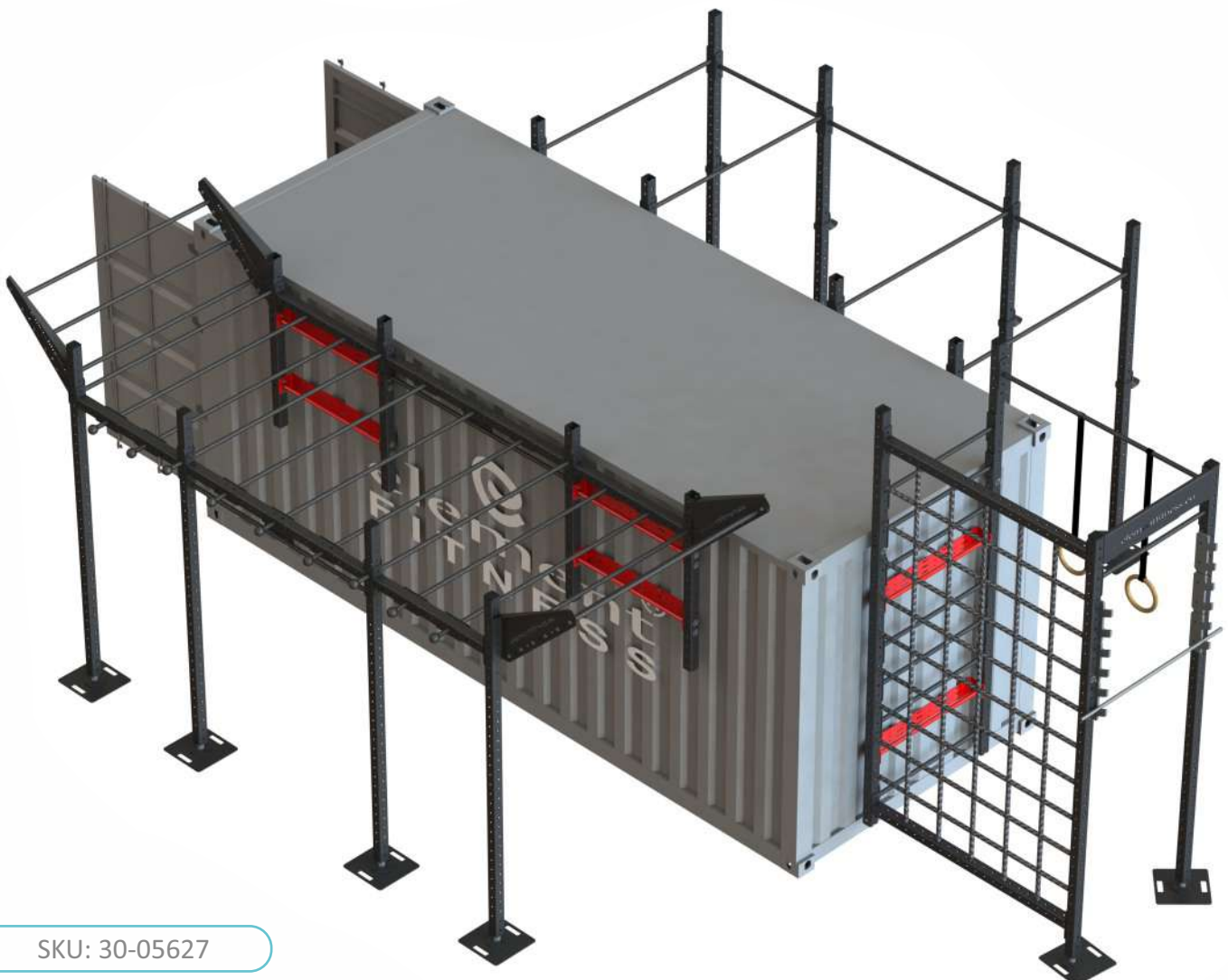
Transforming standard shipping containers, we've created portable fitness hubs housing Element Fitness rigs and essential tools. Whether 10 or 20 feet, each container is customized to match your needs, expanding training facilities and bringing professional outdoor workouts anywhere. Trusted by EU and NATO military formations, our integrated rig system is ready to meet your training challenges head-on. It's more than a container; it's your deployable fitness solution.





SKU: 30-05628

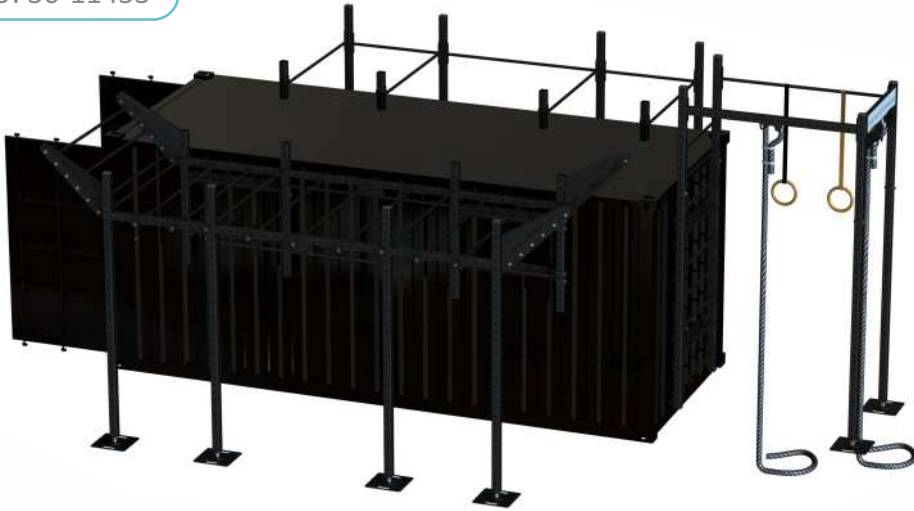
10" ELEMENT FITNESS TRAINING CONTAINER
EUIPO REG.NO 001477566-0001



SKU: 30-05627

20" ELEMENT FITNESS TRAINING CONTAINER
EUIPO REG.NO 007973292-0001

SKU: 30-11453



With neatly organized shelves, packed rigs, an array of attachments, and simple instructions our containers are ready to empower your training. Need electricity? Craving air conditioning? We've got you covered. Customize your container to suit your needs.



ELEMENT FITNESS

DIY CONTAINER SYSTEM

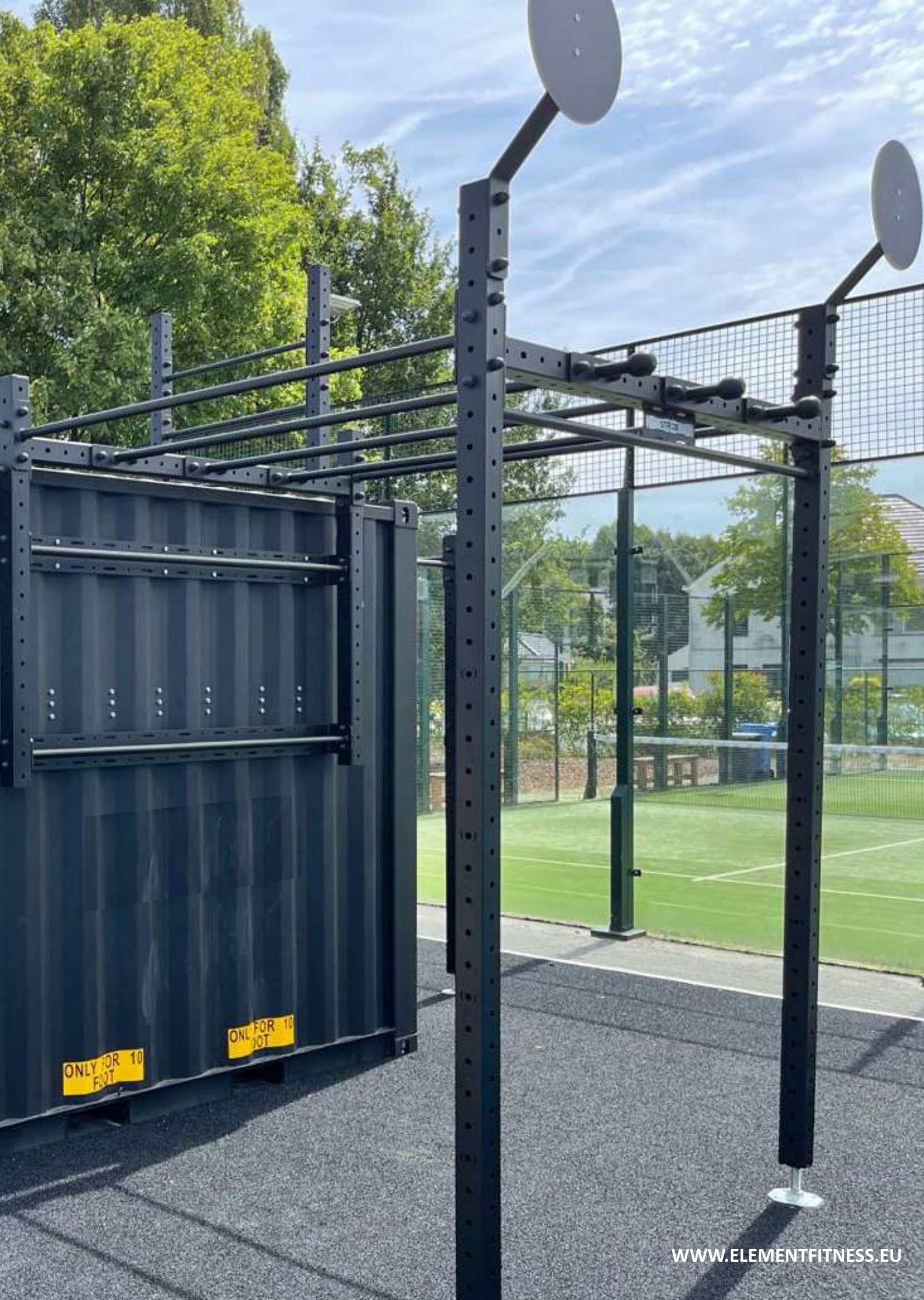
A custom container at your door in a wink of an eye.

For our clients, we constantly work to deliver the best and most efficient solutions. It frequently occurs when a container is ready and waiting for a new breath.

Retouch, design, take a drill and go!

One method we help our customers save production costs and delivery times is by providing ready-made container accessory packages in place of the actual container. Simply choose between 10, 20, or 40 feet for the size of your container, and our managers will provide you with step-by-step installation instructions before everything is delivered right to your door.





ONLY FOR 10
FOOT

ONLY FOR 10
FOOT

FUNCTIONAL CROSS TRAINING RIGS



Element Fitness rigs

are designed for professional use in strength, high-intensity training, as well as for functional training with the use of own weight.

The complex is a set of elements for the formation of training zones of various sizes, depending on the training purposes and the number of users.

Depending on your gym layout and preferences stand-alone (floor-mounted) and wall-mounted rigs are available.

All frame elements are universal which allows them to transform easily and expand. Frames are designed for CrossFit and mass competitions, power sections of fitness clubs, gyms, and educational institutions.



Jump
elementfitness.eu

HAMILTON'S LEISURE





HAMILTON'S LEISURE, WOLVERHAMPTON, UK

Element Fitness partnered with Outdoor Fitness Concept to transform Hamilton's Leisure in Wolverhampton by creating a cutting-edge outdoor fitness space. The project aimed to provide fitness enthusiasts with an all-year, functional training zone that combines innovation and durability.

This functional rig offered Hamilton's Leisure an invaluable asset for fitness enthusiasts. It provided a diverse range of training options, making it suitable for various fitness levels and goals. As phase 3 of the project is delivered, this rig will continue to serve as a focal point for promoting health and wellness in the community.

GYM! ORIGO





Gym!

GYM! Origo, Riga, Latvia

For this project, we have designed the combined functional training and OCR training station, which has a lot of calisthenics and gymnastics attachments. An array of accessories we've also provided to ensure Gym! was well-equipped to meet the expectations of excited new members. Gym! is making waves in the local fitness industry whilst preserving a boutique look and feel.



**GUILDFORD SPECTRUM
LEISURE COMPLEX**



GUILDFORD SPECTRUM LEISURE COMPLEX, UK

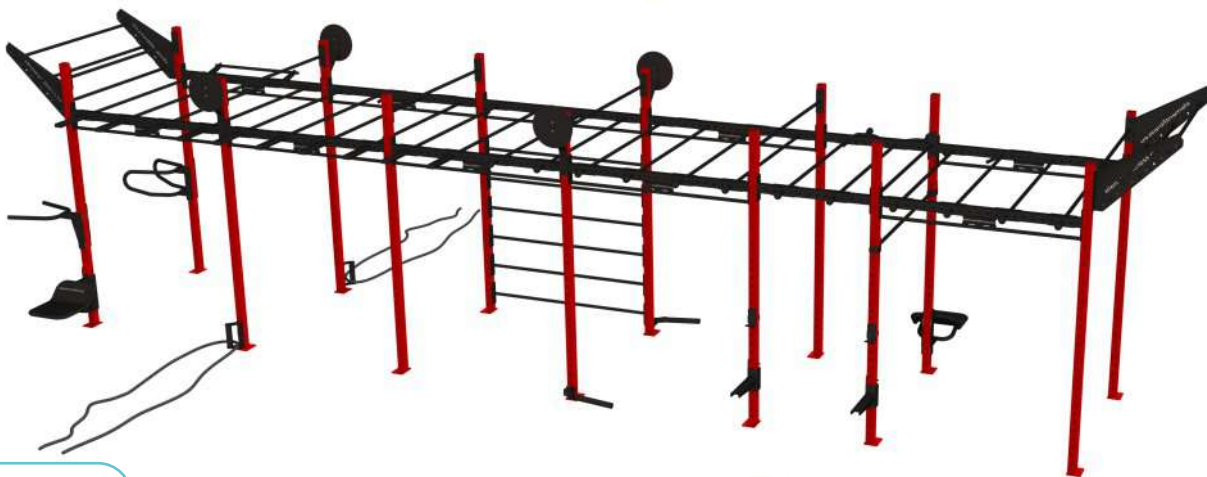
The whole project was completed in 2.5 weeks, and the addition of an outdoor Training Space has allowed Guildford Spectrum to add over 20 group exercise classes. More than that, this outdoor fitness space has zero operational costs and is super easy to maintain.



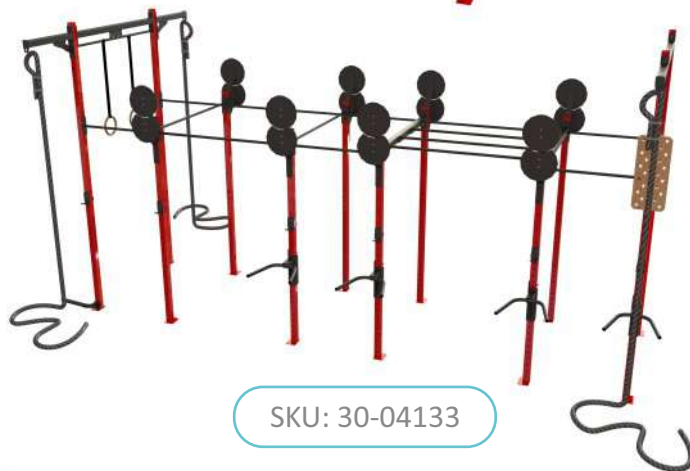
**GUILDFORD
SPECTRUM
LEISURE COMPLEX**



SKU: 30-02017



SKU: 30-03892



SKU: 30-04133



SKU: 30-03288

MULTI RIGS



SKU: 30-12498



SKU: 30-05945



SKU: 30-05850



SKU: 30-05839



SKU: 30-04209



SKU: 30-14879



SKU: 30-05138



SKU: 30-14465

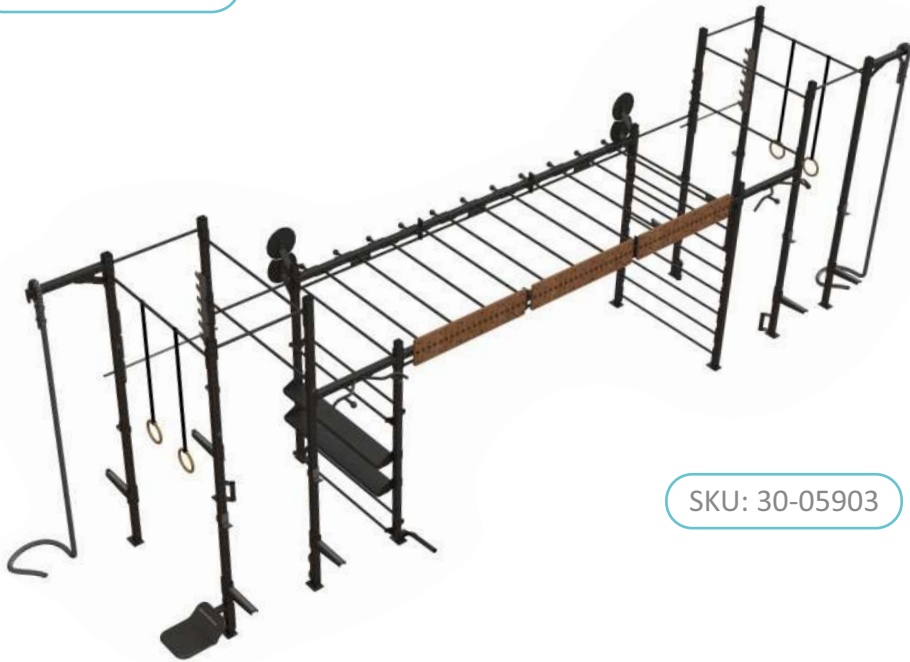


SKU: 30-13642

MULTI RIGS



SKU: 30-13818



SKU: 30-05903



SKU: 30-04406



FUNCTIONAL TRAINING ATTACHMENTS



SKU: 20-05806
HALF SAFETY BARS



SKU: 20-03025
PREMIUM J CUPS



SKU: 20-08812
THIGH PAD



SKU: 20-03005
REMOVABLE DIP BARS



SKU: 20-01692
PREMIUM V DIP BARS



SKU: 20-04119
DIP BARS



SKU: 20-03522
PLYO PLATFORM



SKU: 20-06627
ADJUSTABLE HIP RAISE BENCH



SKU: 20-01097
BATTLE ROPE CONNECTION



SKU: 20-00475
WALL BALL TARGET



SKU: 20-00507
WALL BALL TARGET ADDITIONAL



SKU: 20-02986
REMOVABLE PULL-UP BAR



SKU: 20-00959
CORE TRAINER



SKU: 20-08911
CORE TRAINER



SKU: 10-01730
ON BEAM ANCHORING POINT



SKU: 10-09053
CUSTOM LOGO PLATE



SKU: 10-05144
WOODEN LADDER



SKU: 20-00993
METAL LADDER



SKU: 20-02881
HANDSTAND PUSH
UP SHIELD



SKU: 20-04211
SINGLE LEG SUPPORT



SKU: 20-00130
MULTI GRIP BAR



SKU: 20-02789
WIDE ON BEAM PULL UP
BAR WITH SPHERES



SKU: 20-00512
MULTI LEVEL PULL UP BAR



SKU: 20-00293
ON BEAM PULL UP BAR



SKU: 20-01728
WIDE ON BEAM PULL UP BAR



SKU: 20-01524
FLYING PULL UP BAR 1.77M



SKU: 20-03156
MONKEY-BAR
1.77M



SKU: 20-03418
MONKEY-BAR
1.05M



SKU: 20-03016
OUTBOARD
ATTACHMENT



SKU: 20-01062
FLYING PULL UP
BAR 1.05M



SKU: 10-00503
FOOT PLATE
0.4X.0.4M



SKU: 10-02723
FOOT PLATE
0.65M



SKU: 10-01194
FOOT PLATE
1.05M



SKU: 10-03037
FOOT PLATE
1.77M

SQUAT RACKS AND STANDS

A woman with her hair in a ponytail, wearing a light-colored tank top and black leggings, is performing a squat on a black power rack. She is holding a barbell across her shoulders. The rack is positioned in front of a large window with white curtains, allowing natural light to illuminate the scene. The floor is covered with a grey patterned mat.

Power Racks and Squat Racks

are designed for professional use during power training. The vertical pillars are made of a high-quality 80x80mm steel profile. The equipment's standard height of 2,4 m or 2,8 m allows installing it both in houses and apartments and on-premises equipped for training.

The rack may be fully disassembled. This makes transportation easy and expands its application scope. The holders are made of 8 mm steel and are equipped with special protection sheets made of ultra-high molecular weight polythene. They protect the friction surfaces against wear and ensure additional shock absorption when the weight is let down.

The set may be equipped with additional sections, fastening for inventory storing, and special horizontal bars.

All other Element Fitness equipment is completely compatible with the Power Rack and Squat Rack. It enables combination and transformation into other kinds of racks. Squat racks and power racks are perfect for use at home as well as in the power areas of health clubs and gyms.



SKU: 30-06978
HALF RACK PRO

ZRCE BEACH

BOXING
— LEGENDARY —

elementfitness.eu



ZRCE BEACH, CROATIA

Training by the beach just got better! We recently completed a new project in Croatia in partnership with StarFitness, where we installed indoor training stations near the beautiful Adriatic Sea.

To ensure the longevity of our equipment in the salty sea air, we made sure to use hot zinc galvanization on the pillars. This added layer of protection means that our training stations will withstand the toughest conditions and keep looking and performing their best for years to come.



SKU: 30-03027



SKU: 30-03102



SKU: 30-04554



SKU: 30-04181



SKU: 30-04120



SKU: 30-13707



SKU: 30-04408



SKU: 30-05557



SKU: 30-05040



SKU: 30-03856

SQUAT RACKS AND STANDS



SKU: 30-09697



SKU: 30-06978



SKU: 30-06915



SKU: 30-13877



SKU: 30-15173



SKU: 30-06791



SKU: 30-13065



SKU: 30-05518



SKU: 30-06810



BOXING RIGS AND RAILS



**WORLD CLASS BOXING ACADEMY,
REYKJAVIK, ICELAND**

A purpose-designed system crafted for professional boxing training and versatile functional workouts with punch bags and multi rigs. This comprehensive complex offers a flexible array of elements to create training zones of various sizes, tailored to your gym's layout, storage needs, and user capacity. Boxing Rigs and Rails are engineered for boxing and martial arts sections in fitness clubs, gyms, educational institutions, boxing academies, and home gyms.

Our boxing rigs are available in stand-alone (floor-mounted), wall-mounted, and ceiling-mounted configurations, providing adaptability to suit any gym environment. With full customization options, including curved angles and the ability to navigate restricted spaces, we specialize in implementing specific and challenging projects. Boxing rigs with all other Element Fitness equipment. This ensures a cohesive and integrated fitness space where diverse training needs are met.



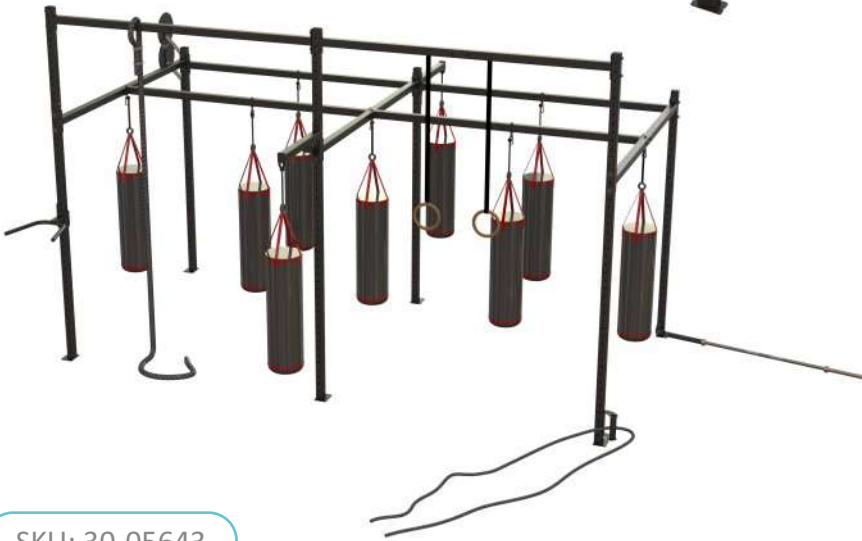
As an added innovation, our Roller Mounts for heavy punch bag hanging glide effortlessly along the rails, offering quick locking capabilities. This not only facilitates easy movement of punch bags but also maximizes your gym space, creating a dynamic training environment.



SKU: 30-06974



SKU: 30-13884



SKU: 30-05643



SKU: 30-05444



SKU: 30-12512



SKU: 30-09000



SKU: 30-14049

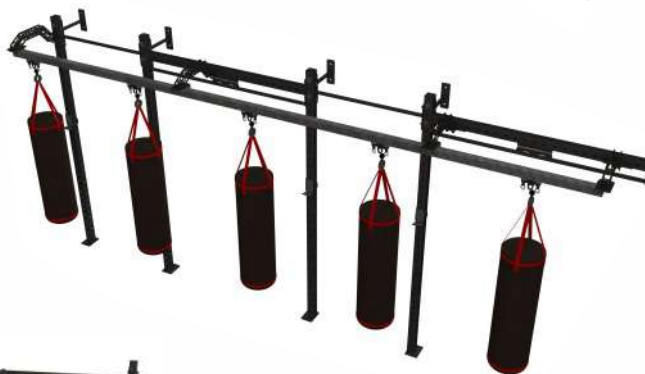
BOXING RIGS



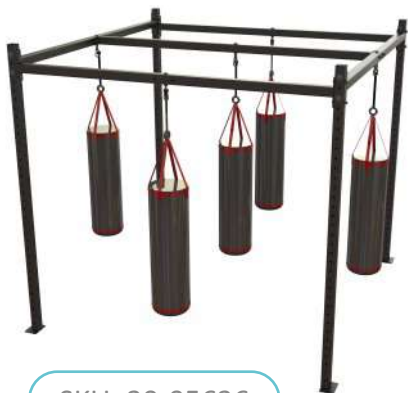
SKU: 30-11732



SKU: 30-07671



SKU: 30-06572



SKU: 30-05636



SKU: 30-05974



CONDITIONING EQUIPMENT



Explore our conditioning equipment, meticulously crafted for high-intensity functional training that engages all muscle groups, fostering physical power, explosive strength, and endurance. Designed with inclusivity in mind, our equipment is easily adjustable, catering to both professional athletes and beginners alike.

Crafted from high-quality materials, our structures stand as a testament to reliability, durability, and safety. We prioritize your fitness journey, ensuring that our equipment supports your goals every step of the way.



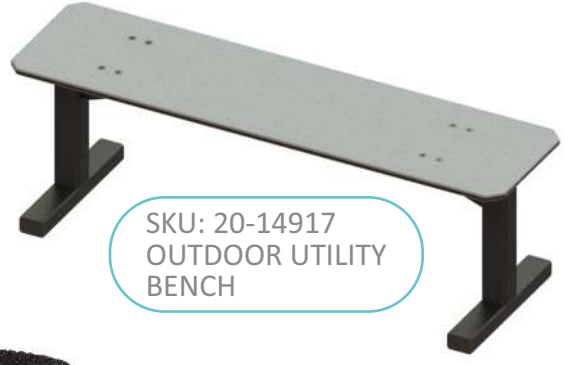


SKU: 20-03128
ADJUSTABLE BENCH

SKU: 20-06734
OUTDOOR ADJUSTABLE
BENCH



SKU: 20-05997
UTILITY BENCH



SKU: 20-14917
OUTDOOR UTILITY
BENCH



SKU: 20-08991
S.LEG SQUAT STAND



SKU: 00-03948
JUMP ROPE 38MM, 3M



SKU: 00-03947
BRAIDED BATTLE
ROPE 12M



SKU: 20-09693
MOBILE SLED
WITH LOGO

WWW.ELEMENTFITNESS.EU



SKU: 20-00206
PARALLETTES



SKU: 20-07428
FARMERS WALK HANDLES



WEIGHTLIFTING PLATFORM 3x2.5M
WOODEN INLAY 30MM
SKU: 20-05389_W



WEIGHTLIFTING PLATFORM 3x2.5M
RUBBER 30MM
SKU: 20-05389_R



WEIGHTLIFTING PLATFORM 3x1M
60 MM
SKU: 20-10721



SKU: 20-04198
MOBILE SQUAT STAND



IN-LAID PLATFORM
FOR HALF-RACK 30MM
SKU: 20-07649



SKU: 20-01650
AXLE BAR



SKU: 20-01953
WOODEN PLYO BOX



SKU: 20-06941
WOODEN JERK BOXES SET



SKU: 00-14196
TPU DUMBBELL
10-30KG



SKU: 00-14197
TPU WEIGHTLIFTING PLATE
2.5-25KG



SKU: 00-14198
PU KETTLEBELL
8/16/24KG



SKU: 00-14205
LATEX RESISTANCE BAND
XXS-XL



SKU: 00-14203
SLAM BALL
4/6/8/10/12KG



SKU: 00-14202
WALL BALL
4/6/8/10/12KG



SKU: 00-14200
BARBELL COLLARS



SKU: 00-14199
WEIGHTLIFTING
BARBELL



SKU: 00-14206
BOXING BAG
150x35CM/50KG



SKU: 00-14204
SUSPENSION BELT TRAINER



In our commitment to comprehensive fitness solutions, we've expanded our product range to include free weights and gym tools, from barbells to slam balls. This expansion allows us to offer turn-key projects, providing clients with a worry-free experience in enhancing their training spaces.

Discover the essence of versatility, innovation, and performance in our Conditioning Equipment and Free Weights Gym Tools—crafted to elevate your fitness experience and empower your journey toward greatness.

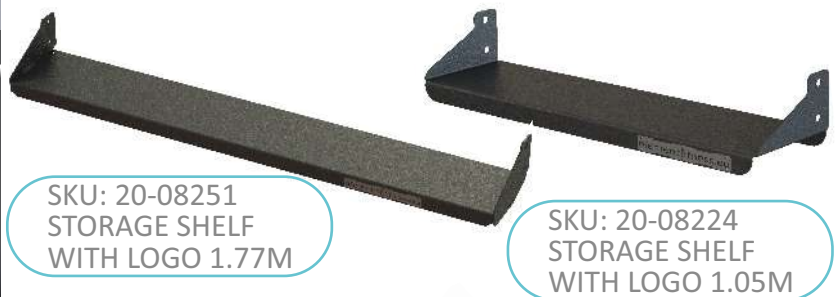
STORAGE SOLUTIONS

You may design dynamic racks for medicine balls, kettlebells, dumbbells, plates, and other equipment using Element Fitness Storage Solutions. Just choose the type of shelf for each tier and the height of the storage rack that you like! All of our storage shelves can be fastened directly to the sides of the rack base or integrated into your rig and are fully compatible with other Element Fitness rigs and conventional pillars.

elementfitness.eu

elementfitness.eu

WWW.ELEMENTFITNESS.EU



SKU: 20-08251
STORAGE SHELF
WITH LOGO 1.77M

SKU: 20-08224
STORAGE SHELF
WITH LOGO 1.05M



SKU: 20-08228
U-SHELF WITH
LOGO 1.77M

SKU: 20-09263
U-SHELF WITH
LOGO 1.05M



SKU: 20-05172
DUMBBELL SHELF 1.05M

SKU: 20-05664
DUMBBELL SHELF 1.77M



SKU: 20-02813
U-SHELF 1.77M

SKU: 20-04606
U-SHELF 1.05M



SKU: 20-02818
SHELF FOR MEDICINE
BALLS 1.05M

SKU: 20-02812
SHELF FOR MEDICINE
BALLS 1.77M



SKU: 20-07372
DISK STORAGE PIN



SKU: 10-02801
DISC SEPARATOR



SKU: 20-02962
HORIZONTAL BAR HOLDER



SKU: 10-04182
U-HOLDER FOR
DUMBBELLS



SKU: 10-03793
STORAGE HOOKS



SKU: 20-02840
BAR-HOLDER



SKU: 20-08790
KETTLEBELL SHELF
WITH LOGO



SKU: 20-04912
DUMBBELL
RACK



SKU: 20-09793
LEAN AND LOW
RACK



SKU: 20-03745
HEAVY DUTY RACK 1.05M



SKU: 20-07326
DOUBLE DUMBBELL
RACK



SKU: 30-06440
HEAVY DUTY RACK 1.05M
FOR DUMBBELLS



SKU: 20-03084
HEAVY DUTY RACK
WITH PLATE STORAGE 1.77M



SKU: 20-06927
PLATE AND BAR TREE



SKU: 30-03983
HEAVY DUTY RACK 1.77M



SKU: 20-06900
8 BAR STORAGE



SKU: 20-06898
4 BAR STORAGE



SKU: 20-06911
DISC STORAGE L



SKU: 20-06933
DISC STORAGE S



SKU: 30-06615
TRAINING RIG
WITH STORAGE



SKU: 30-06584
FUNCTIONAL CORNER



SKU: 30-12628
MULTI-FUNCTIONAL RIG

SUSPENSION BELT FRAMES

Make your workouts with suspension belts more intense and interesting!

We equipped the frame with monkey bars and side horizontal bars so that you can further diversify your workouts. Mount training loops, rubber bands, and hammocks for antigravity yoga, or even make a Ninja Warrior lane, by using our grip trainers.

Diversify workouts to the maximum!

With this design, you will not only create a unique functional area but also provide free space for group activities.

By adding additional 1.5-meter segments, you can easily lengthen the construction up to 9 meters.

Whatever non-standard conditions are in your room, our attachment solutions will allow you to create attachment points for inventory, even on the ceiling or wall.

TAKE THE MAXIMUM OF YOUR SPACE



SUSPENSION BELT FRAMES



SKU: 20-00567
FRAME 1,5M



SKU: 20-00104
FRAME 3M



SKU: 20-00568
FRAME 4,5M



SKU: 20-00569
FRAME 6M



SKU: 20-00129
FRAME 9M

ANCHORING SOLUTIONS



SKU: 20-00102
BELT FRAME BEAM



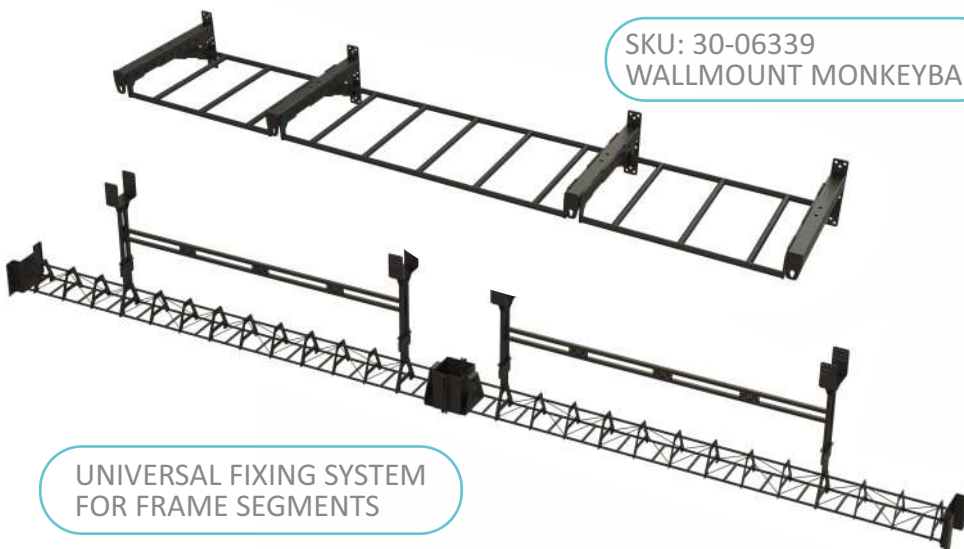
SKU: 20-00684
ANCHORING POINT



SKU: 20-03016
OUTBOARD ATTACHMENT



SKU: 20-02870
TELESCOPIC
ANCHORING POINT



UNIVERSAL FIXING SYSTEM
FOR FRAME SEGMENTS

SKU: 30-06339
WALLMOUNT MONKEYBAR



SKU: 20-00515
RIP TRAINER
ANCHORING STATION



SKU: 30-06220



SKU: 30-03979



SKU: 30-06169



SKU: 30-05624



SKU: 30-06130



SKU: 30-03978



SKU: 30-13162

HOME AND BACKYARD GYM



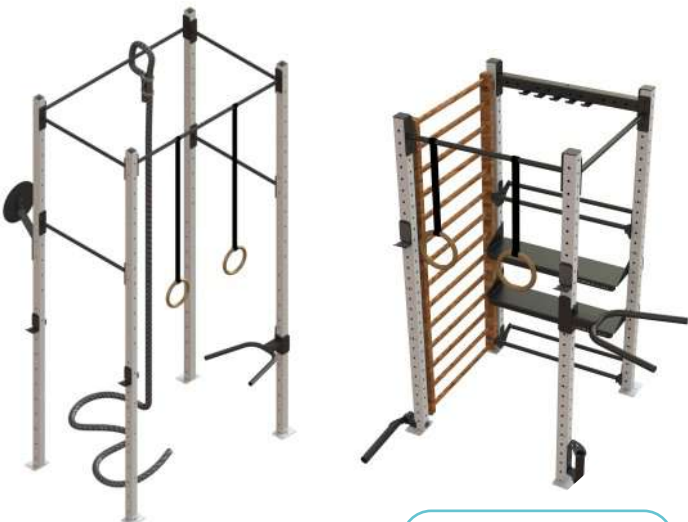
SKU: 30-07580-E0022



SKU: 30-05558



SKU: 30-06615



SKU: 30-04721

SKU: 30-05518



Create a haven of health and joy right in your own backyard or home with a personalized training station—an ideal way for both you and your children to embark on a journey of well-being together. Transforming your space into a sports field offers not only practicality but also the priceless opportunity to share more moments with your kids and less time commuting to and from the gym.

Engage in multifunctional workouts that strengthen not only the body but also the bonds between family members. From pull-ups and push-ups to abdominal workouts and boxing bag sessions, each exercise is a chance to grow together. Squats, lunges, leaps, stretching—each movement is an expression of unity and vitality. Join us in the journey to not just exercise, but to truly live and thrive as a family.

CPR RACK

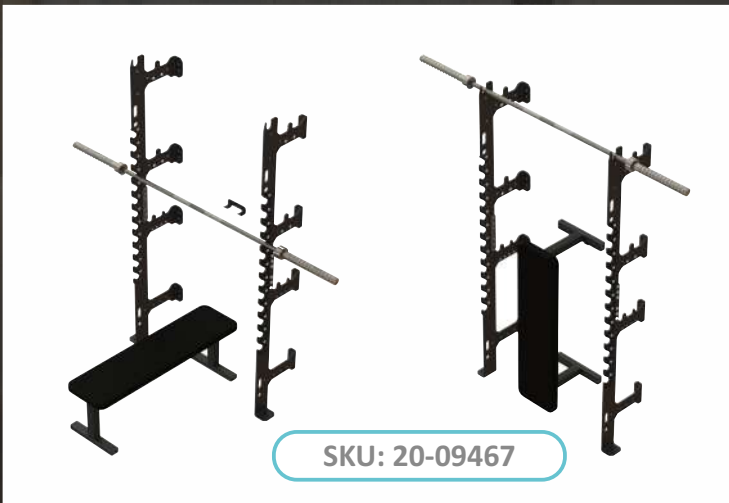
COMPACT PITHY RACK

MAKE MORE WITH LESS

The Compact Pithy Rack or CPR Rack was designed to cover the most vital athletes needs and bring the commercial quality of our functional fitness line to your gym and home in an efficient and affordable way.

The CPR Rack will be the ideal addition to any fitness facility or garage gym if you are trying to conserve space and keeping a track of the budget. Plate storage pins, fixed pull-up bar and anchors can be added separately.





It features a 10 mm thick gauge steel frame with laser cut holes and hooks, 12 fixed hooks with plastic cushioning for placing the barbell at the desired height and fixing holes for plate storage pins and carabiners. More than that, the rack features a special spot to put your Olympic Bar on top, forming a pull-up bar.

CPR rack equipment will arrive meticulously packaged in a sustainable wooden crate, weighing 70kg—a testament to our commitment to quality and environmental consciousness.

